

A Complex Case of a Bernese Mountain Dog

K. English¹, R.E. Jepson², S. Baines³, S. Priestnall¹, L. Benigni², K. Allenspach²,
H.M. Syme²

¹. Department of Pathology and Infectious Diseases, Royal Veterinary College, UK, ².
Department of Veterinary Clinical Sciences, Royal Veterinary College, UK ³. Current address
Willows Veterinary Centre and Referral Service, West Midlands, UK

Case Presentation

A 2 year 9 month male neutered Bernese Mountain Dog presented to the Queen Mother Hospital For Small Animals, Royal Veterinary College, UK in May 2009. He presented with a history of recurrent episodes of vomiting and diarrhoea, intermittent since approximately 6 months of age. In a previous episode January 2009 a tennis ball sized mass was palpated in his cranial abdomen. Following laparotomy the mass was excised and histopathological examination identified fungal hyphae, within the mass consistent with a mycetoma.

Following presentation in May 2009 multiple focal mesenteric and intestinal lesions were identified on ultrasound examination. Lymphadenopathy was also noted. A lesion closely associated with the intestine and a second lesion noted paraintestinally were also observed. A lesion was also noted in the liver.

Exploratory laparotomy revealed grossly multiple nodules throughout the omentum, and nodular thickening in the jejunum. Images below are from the impression smears made intraoperatively. Clinical concern was for histiocytic sarcoma given the signalment of the case.

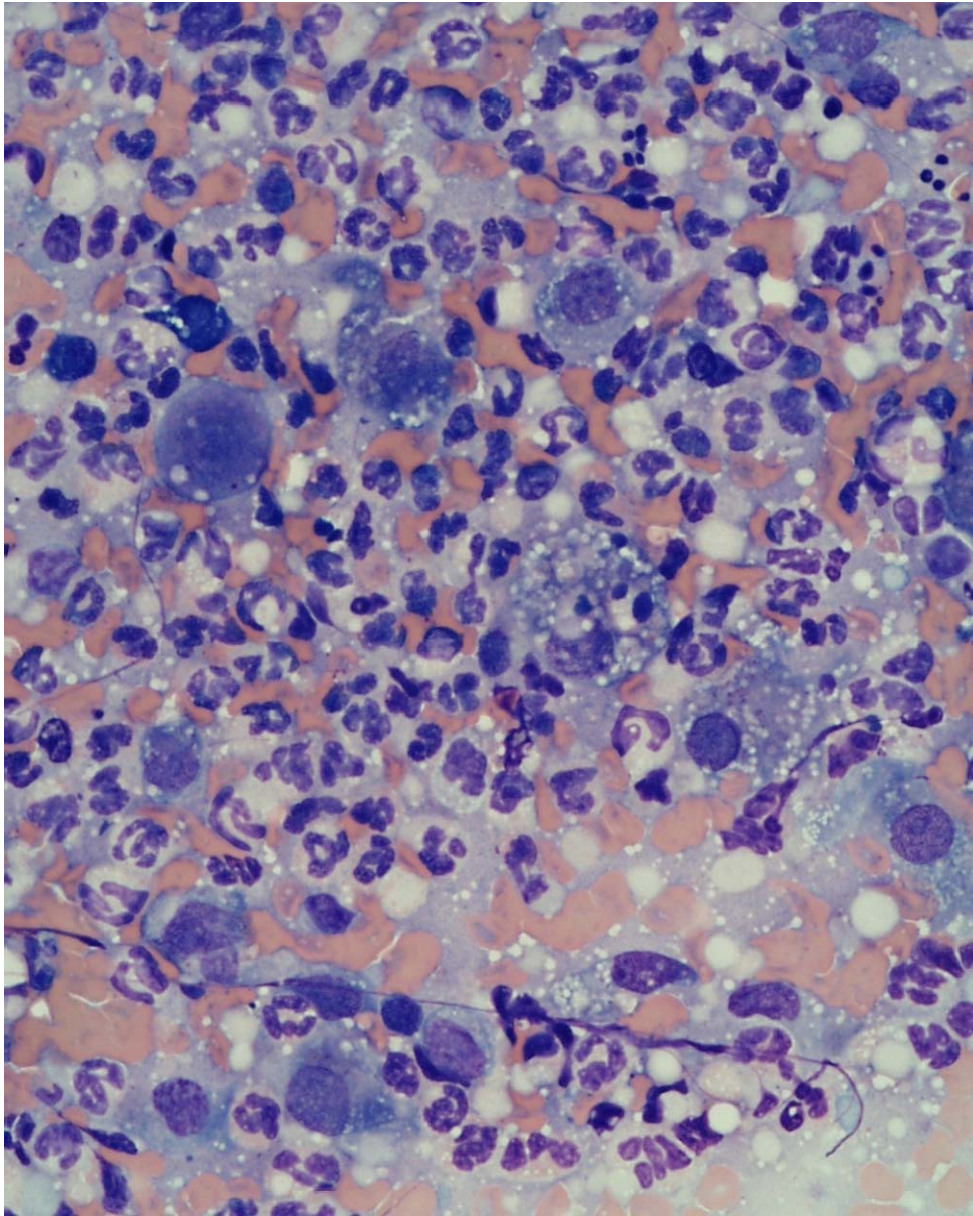


Fig 1. Impression smear of omental lesion x40 obj Modified Wrights Giemsa Stain

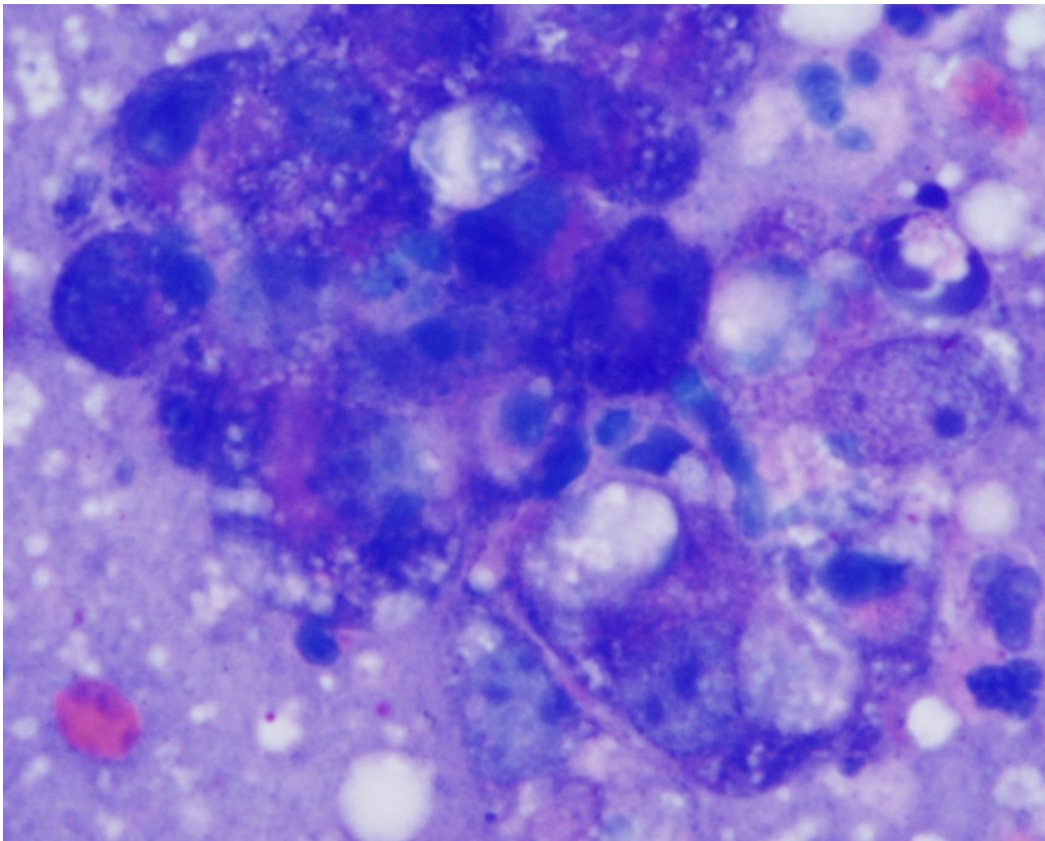


Fig 2 Impression smear of omental lesion x100obj Modified Wrights Giemsa Stain

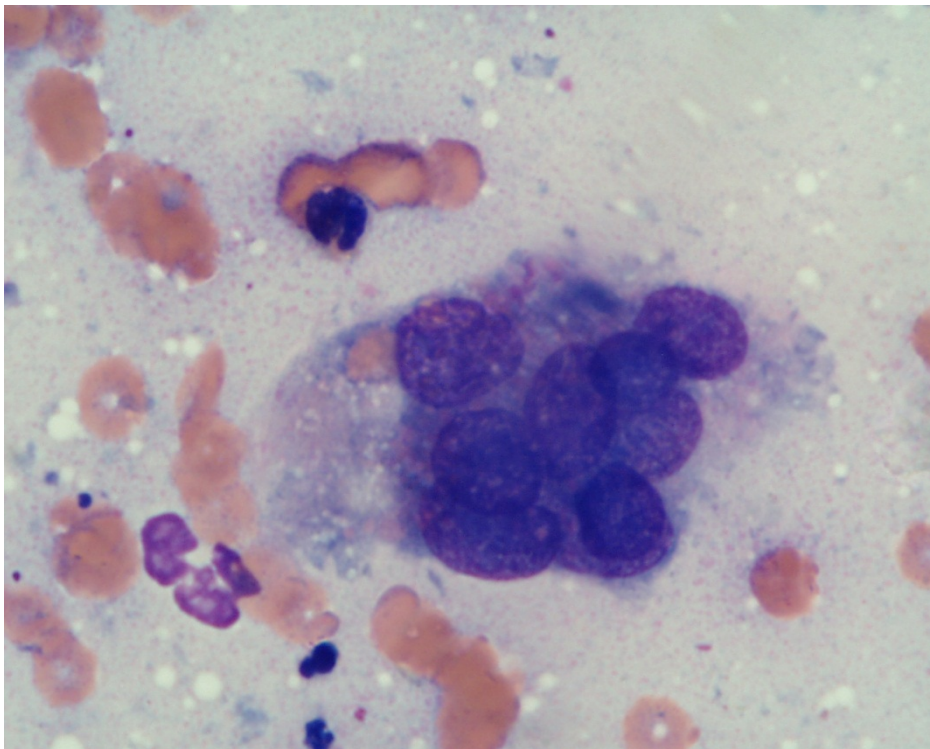


Fig 3. Impression smear of omental lesion x100 obj Modified Wrights Giemsa Stain

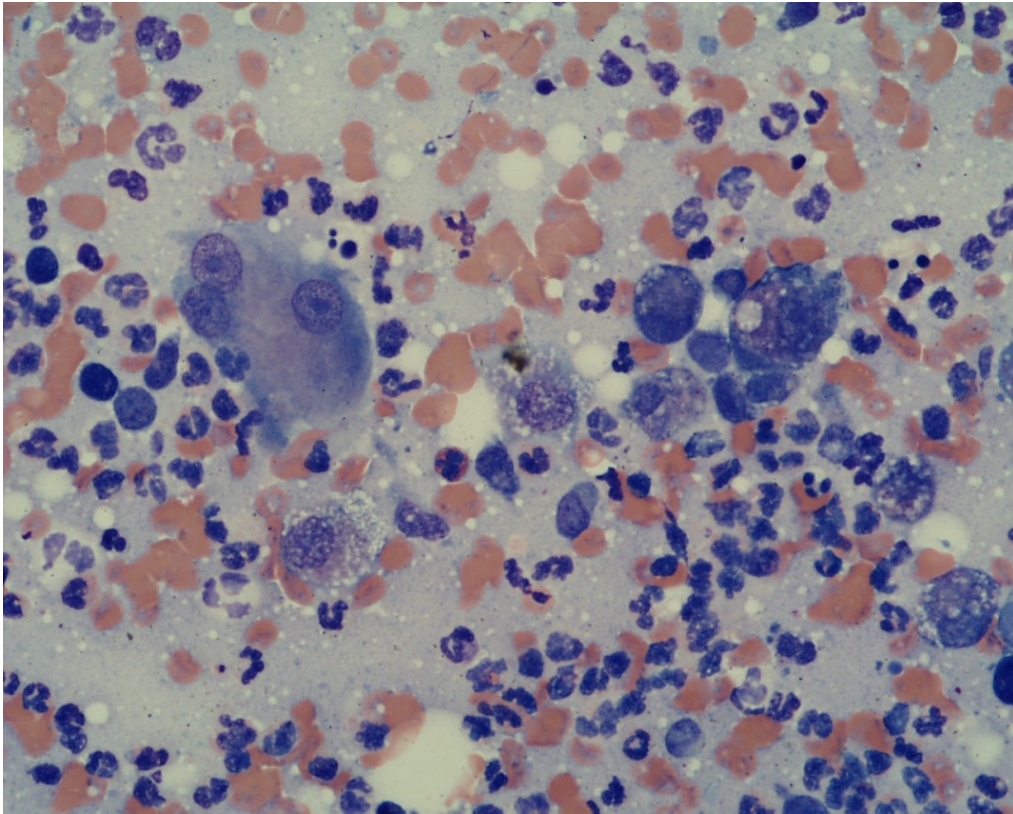


Fig 4 Impression smear of omental lesion x 40 obj Modified Wrights Giemsa Stain

Questions

1. What differentials do you have from the cytologic appearance?
2. What additional stains/tests would you request on the samples given?