

Bone Marrow WORKSHOP

**August 2-3, 2014
(Saturday and Sunday)**

**Rose Raskin, DVM, PhD, DAVCP
Joanne B. Messick, DVM, PhD, DAVCP**

Cost:
Current Trainees \$150
Non-Trainees \$350

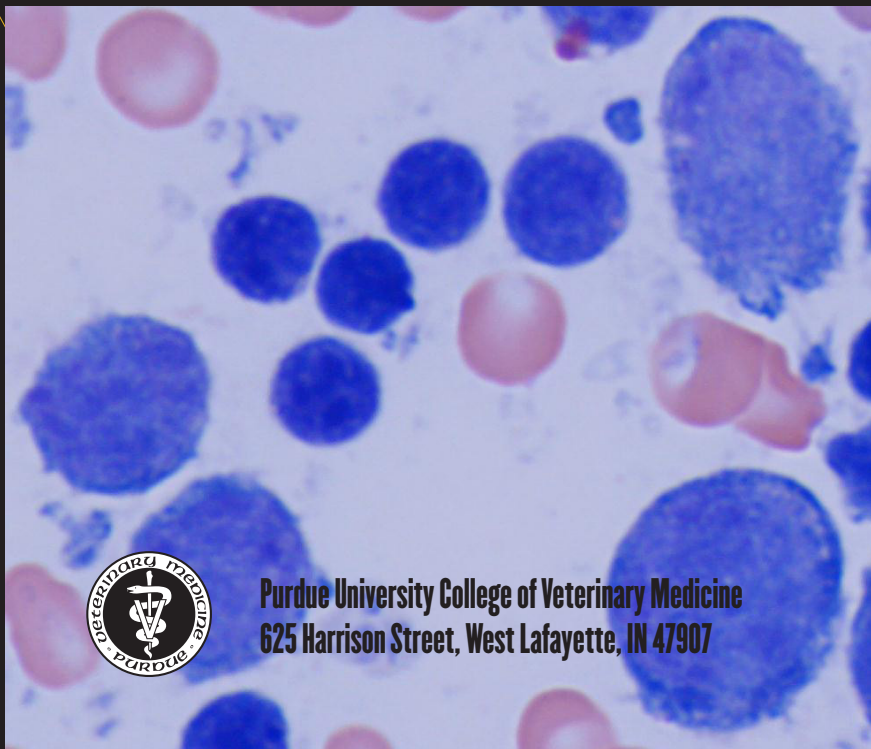
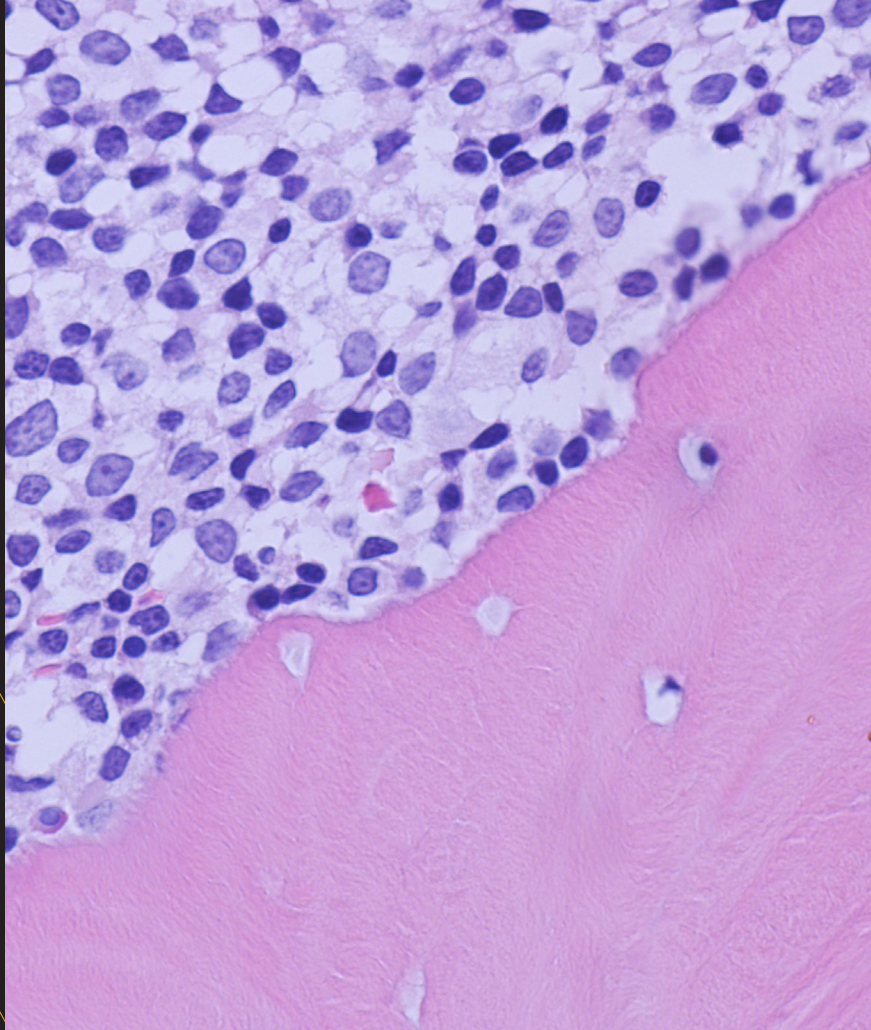
**REGISTER ONLINE
HERE**

11 Continuing Education Credits (CE) offered for this Workshop

The workshop is designed for professionals to review normal and pathologic bone marrow in companion animals via cytology and histology. Blood and bone marrow data from case examples will demonstrate correlation between the different biopsy methods.

Learn through group discussions and personalized microscopy. Individual microscopes will be provided or bring your own.

Trainees will gain confidence in evaluating bone marrow samples.



**Purdue University College of Veterinary Medicine
625 Harrison Street, West Lafayette, IN 47907**

Bone Marrow Histopathology Workshop

SCHEDULE

Saturday, August 2

8:30 a.m.	Registration (Breakfast Provided)
9:00 - 11:30 a.m.	Review bone marrow anatomy and physiology, responses to injury and disease, and collection techniques. Learn a systemic approach to bone marrow histologic and cytologic examination using case examples.
11:30 a.m.	Break
12:00 p.m.	Cytologic/Histologic Correlation Cases, Part 1
1:00 p.m.	Lunch (Provided)
2:00 p.m.	Cytologic/Histologic Correlation Cases, Part 2
2:30 p.m.	Multiheaded Microscope (Group 1) Projection Cases (Group 2)
4:00 p.m.	Break
4:30 p.m.	Multiheaded Microscope (Group 2) Projection Cases (Group 1)
6:00 p.m.	Adjourn

Sunday, August 3

8:30 a.m.	Breakfast (Provided)
9:00 a.m.	Self Study Cases
11:00 a.m.	Break
11:30 a.m.	Review of Self Study Cases
12:00 p.m.	Lunch (Provided)
1:00 p.m.	Timed Assessment
2:30 p.m.	Review of Assessment Cases
3:30 p.m.	Adjourn

REGISTER ONLINE HERE



Bone Marrow Histopathology Workshop

Name _____
 Address _____
 City _____ State _____ Zip _____
 Phone _____ Email _____

Company / Institution _____

_____ Current Trainee Registration Fee \$150

_____ Non-Trainees Fee \$350

_____ An additional \$25 Late Fee will be added after July 15, 2014

Payment is required with registration. Registration includes breakfast/lunch/breaks. A full refund will be granted if request is received in writing by July 22, 2014. We are not able to process refunds after that date. Purdue University is not responsible for costs incurred due to cancellation.

Purdue is committed to making its programs accessible to individuals with disabilities. If you require an accommodation or special assistance for this program, due to a disability, please contact the Conference Division at (866) 515-0023 at least one week before the program begins.

_____ I have special dietary needs (vegetarian, diabetic, etc.). Please contact me.

Register online or mail to:

PEC Business Office

Purdue University Stewart Center 110

128 Memorial Mall

West Lafayette, IN 47907-2034

Phone: 765.494.3253 Fax: 765.494.0567

OR indicate credit card information below.

Make checks payable to Purdue University.

_____ Mastercard _____ Visa _____ Discover _____ American Express

Card Number _____

Expiration Date _____

Print Name _____

Signature _____

Purdue University is an equal access/equal opportunity university.

Please direct questions regarding registration and travel to: Marti Burns 765.494.0611 or mhburns@purdue.edu.

Please direct questions regarding educational program to: Dr. Rose Raskin 765.496.6612 or rraskin@purdue.edu.

Travel and Hotel Accommodations – Bone Marrow Workshop August 2 & 3, 2014

Attendees must secure their own overnight lodging. Purdue Veterinary Medicine recommends reserving your hotel room at one of the preferred hotels listed below.

Recommended Hotels: When making your reservations, please mention you are with the Purdue Veterinary Medicine Bone Marrow Workshop to receive the conference rate.

Purdue Union Club Hotel @\$99/night

101 North Grant Street
West Lafayette, IN 47907
1-800-320-6291

Four Points by Sheraton

\$100/single/night and \$110/double/night
1600 Cumberland Avenue
West Lafayette, IN 47906
1-800-777-9808

Guests of Four Points by Sheraton may use their hotel shuttle service to Lynn Hall. Please see hotel guest services for shuttle information and times.

Other Area Hotels:

Hilton Garden Inn

356 East State Street
West Lafayette, IN 47906
765.743.2100

Holiday Inn Select

515 South Street
Lafayette, IN 47901
1.800.777.9808

Campus Map

http://www.purdue.edu/campus_map/

The workshop will be held at Lynn Hall in the Purdue University College of Veterinary Medicine.
625 Harrison Street, West Lafayette, IN 47907.

Please enter from the ground level East Entrance off of Marsteller Street.

Parking Information

When driving to Purdue's West Lafayette Campus, please allow plenty of travel time for parking and busy campus streets. Before 7:00 a.m. and after 5:00 p.m. on weekdays and on Saturday and Sunday parking is free in any of the garages or surface lots marked for "A" passes. Please do not park in spots marked for clients of the Veterinary Hospital.

Transportation

If you are flying, Indianapolis will be the closest international airport. If you are driving, you can obtain directions at <http://www.mapquest.com> to your hotel and Purdue University.

Rental Cars (Indianapolis Airport)

Please view the airport's website www.indianapolisairport.com to see what companies are offered at the airport and their rates.

Shuttle Service (from Indianapolis Airport)

You can take the Lafayette Limo shuttle service or the Star of America shuttle service from the Indianapolis airport directly to the Union Club Hotel or Four Points by Sheraton. To do either one of these you will need to go the Ground Transportation Center (GTC) which is located on Level 1 of the parking garage. The GTC is a one-stop shop for rental cars and shuttle service.

If you use a shuttle service, be sure to book your return to the airport as well. Contact Lafayette Limo at 765.497.3828 or www.lafayettelimo.com to reserve your pick up. Keep in mind that Lafayette Limo accepts cash only on the the shuttle. Contact Star of America at 1.800.933.0097 or www.starofamerica.com to make your reservation.

Please Note: West Lafayette is on Eastern Daylight Savings Time in August.