

ESVCP case submission Case History:

**Contributors:**

Leslie Sharkey<sup>1</sup> , Angela Gwynn<sup>1</sup> , Alex Bianco<sup>2</sup> , Brittany Welch Huston<sup>2</sup> , Leah Manning<sup>3</sup> , Timothy O'Brien<sup>3</sup> , James Schoster<sup>1</sup> , Ashley Zibura<sup>1</sup> , Michala de Lind Henriksen<sup>1</sup>

<sup>1</sup>Department of Veterinary Clinical Sciences, College of Veterinary Medicine, University of Minnesota. Shark009@umn.edu

<sup>2</sup>Large Animal Medicine and Surgery, Veterinary Population Medicine Department, College of Veterinary Medicine, University of Minnesota.

<sup>3</sup>Anatomical pathology, Veterinary Population Medicine Department, College of Veterinary Medicine, University of Minnesota

**Species:** Horse

**Specimen:** Nasal mas aspirate

**Rationale for acceptance:** Unusual specimen from a common but under-represented species in the literature. Interesting histologic diagnosis.

**Signalment:** 25 year old Thoroughbred gelding

**History:** The horse presented for evaluation of acute blindness in the left eye and chronic nasal discharge. The left sided nasal discharge began several months ago as slightly hemorrhage progressing to mucopurulent. Several weeks ago, exophthalmos was noted in the left eye. The horse receives regular dental care.

**Clinical findings:** On presentation, the horse was bright, alert, and anxious. He had a normal body condition score with moderate topline muscle atrophy and normal vital signs. There was left mandibular lymphadenopathy, left exophthalmos, and had a negative menace response on the left. Mucopurulent nasal discharge was present on the left; decreased airflow was noted with a slight deviation of the muzzle to the right suggesting the potential for facial nerve involvement. Radiographs revealed a lobular mass in the left frontal and maxillary sinuses with increased soft tissue opacity. A nasal flap surgical approach was used to obtain samples for cytology and histopathology and to debulk the mass.

**Question:**

Describe the lesions and make a cytological diagnosis.

**Images:**



**Figure 1:** Intraoperative gross image of the mass obtained during nasal flap surgery.

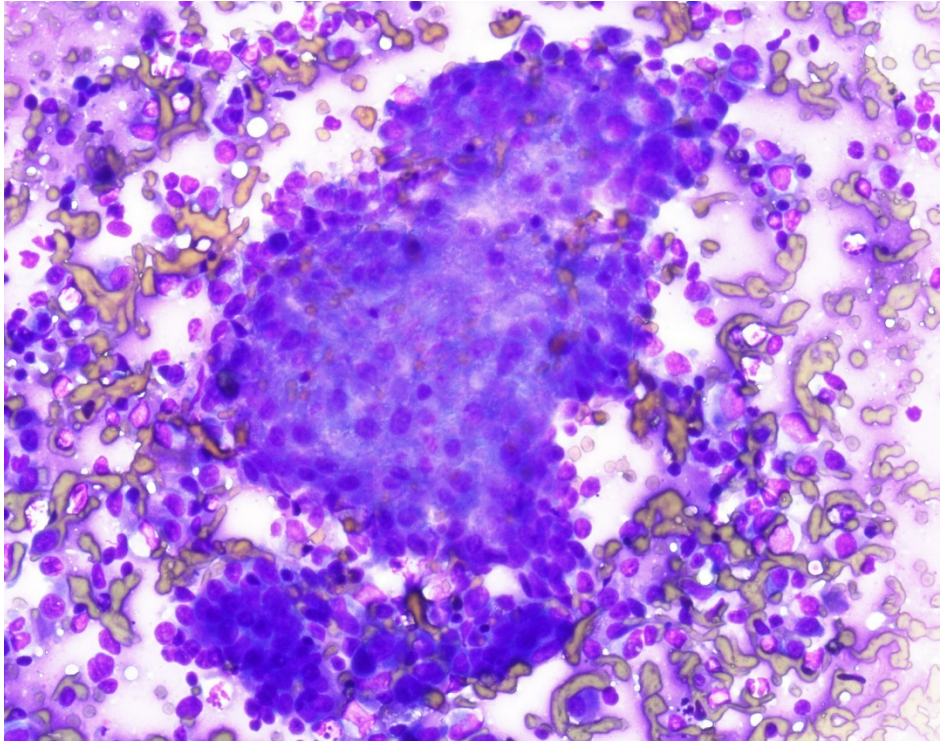


Figure 2: Cytology sample (200x, Wright Giemsa stain)

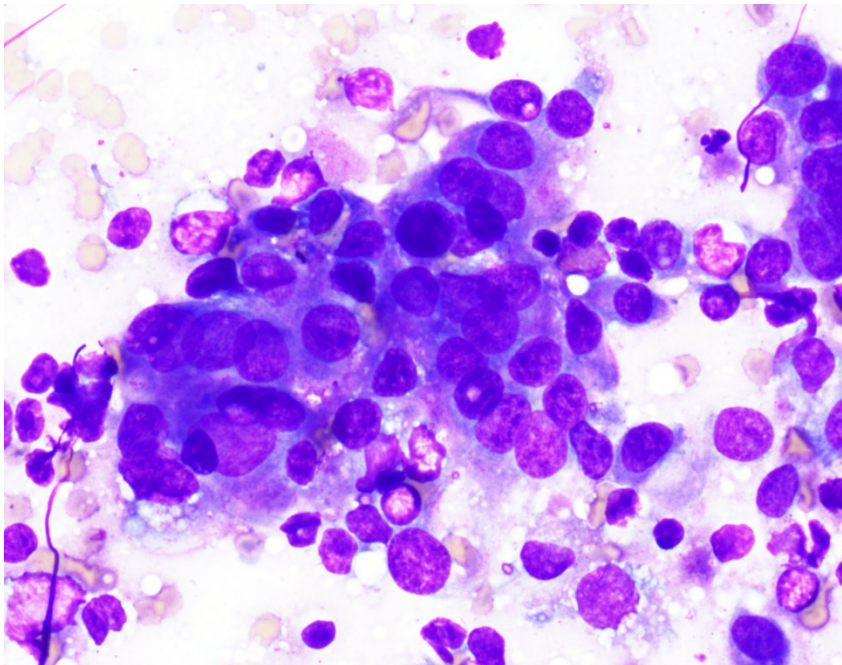


Figure 3: Cytology sample (500X oil, Wright Giemsa stain)



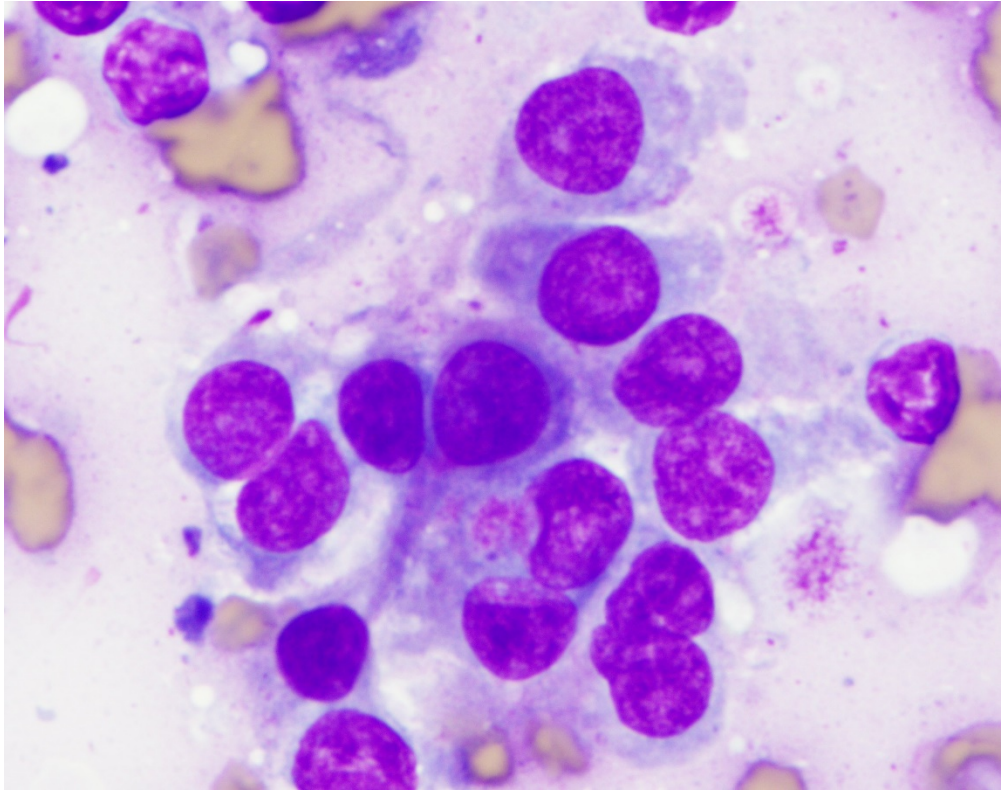


Figure 4: Cytology sample (1000X oil, Wright Giemsa)

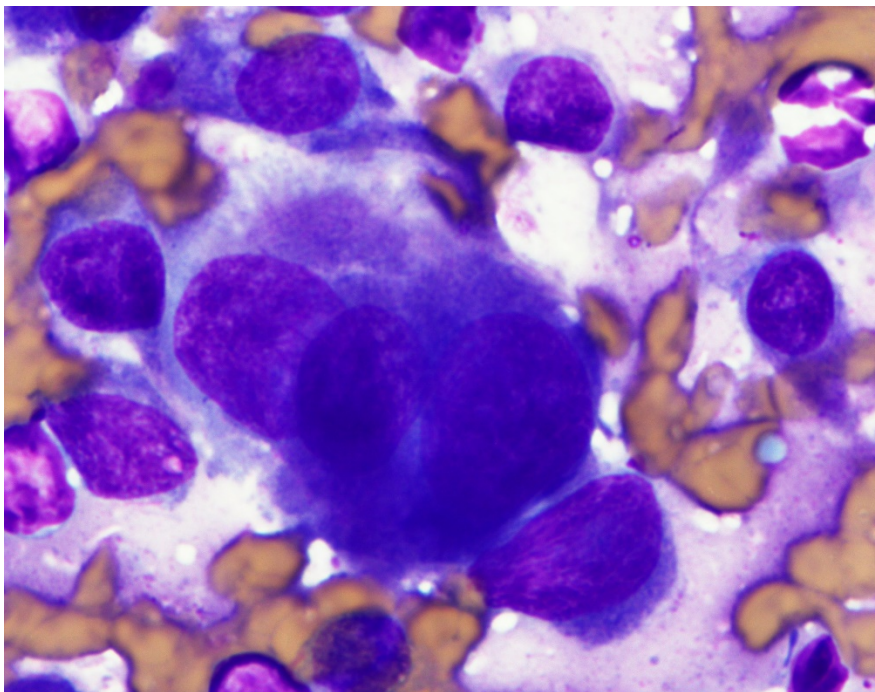


Figure 5: Cytology sample (1000X oil, Wright Giemsa)