

Abdominal mass in a hedgehog

Paola Cazzini¹, Jenna Richardson², Nicola Fraser¹, Joanna Lodzinska³, Amy L. Robinson⁴, Adrian W. Philbey¹

1 Easter Bush Pathology; 2 Rabbit and Exotic Animal Department; 3 Diagnostic Imaging Department; and 4 Royal (Dick) School of Veterinary Studies, The University of Edinburgh, Easter Bush Campus, Edinburgh, UK

SIGNALMENT:

2-year-old female entire African pigmy hedgehog

HISTORY AND CLINICAL FINDINGS:

2-month history of reduced appetite and weight loss, and recent vomiting.

A large, firm mass originating from the cranial left abdomen was palpated.

On ultrasound, the mass appeared to arise from the spleen, the liver had multiple nodules, and the mesenteric lymph nodes were enlarged. Ultrasound guided fine needle aspirates of the mass were collected.

QUESTIONS:

What are the possible differential diagnoses in this case?

What stains would you use to confirm your suspicion?

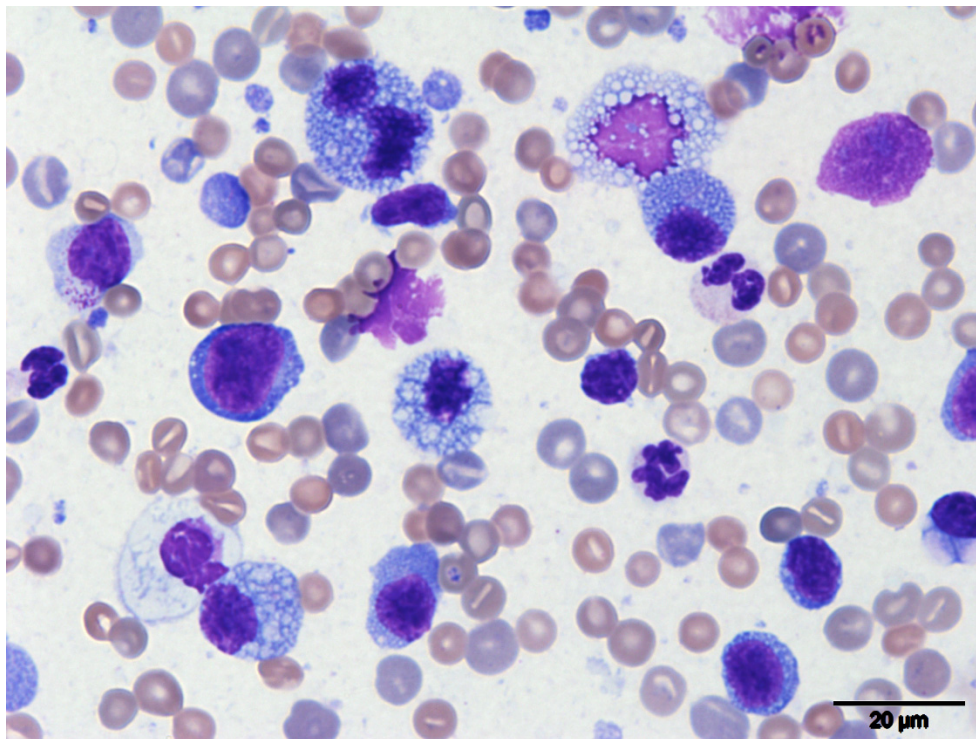


Figure 1

Abdominal mass in a hedgehog. Modified Romanowsky stain, Original magnification X600

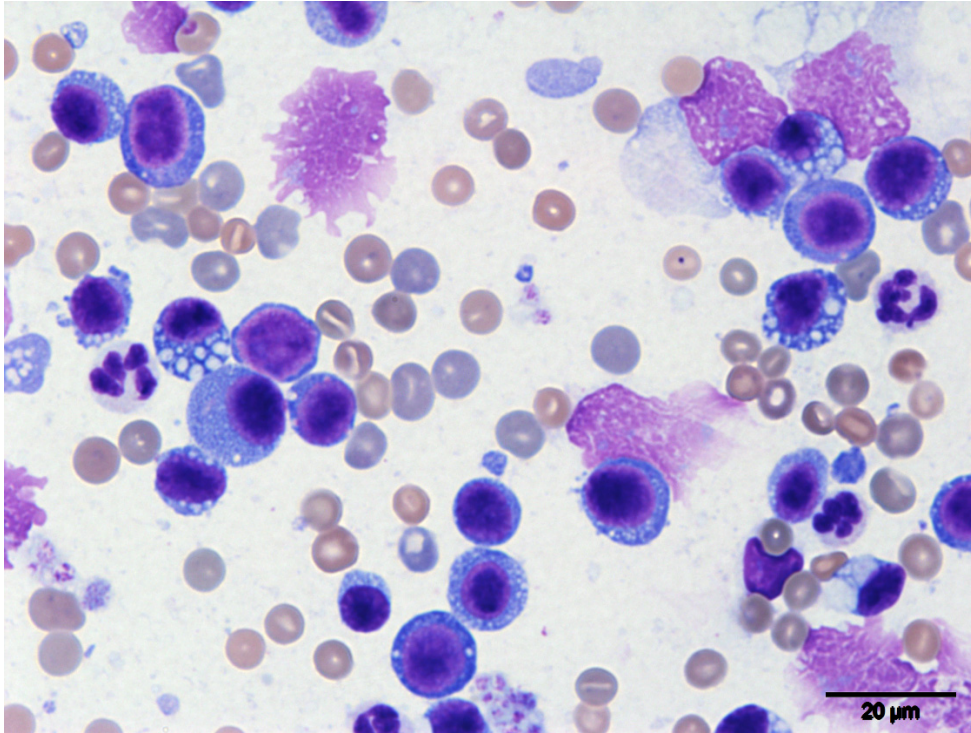


Figure 2
Abdominal mass in a hedgehog. Modified Romanowsky stain, Original magnification X600

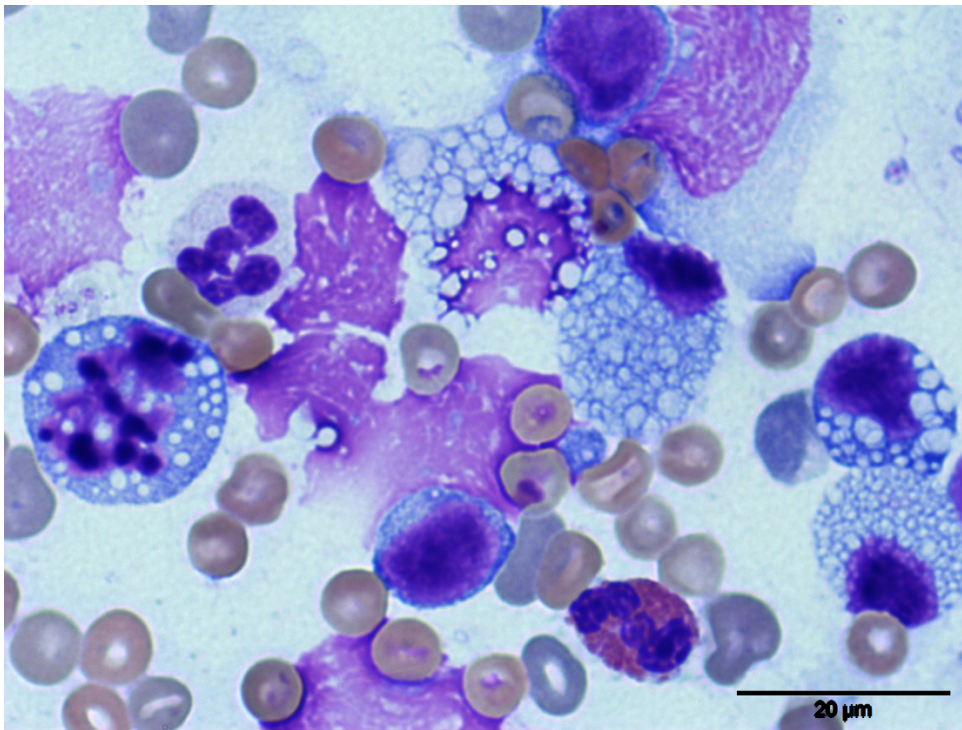


Figure 3
Abdominal mass in a hedgehog. Modified Romanowsky stain, Original magnification X1000

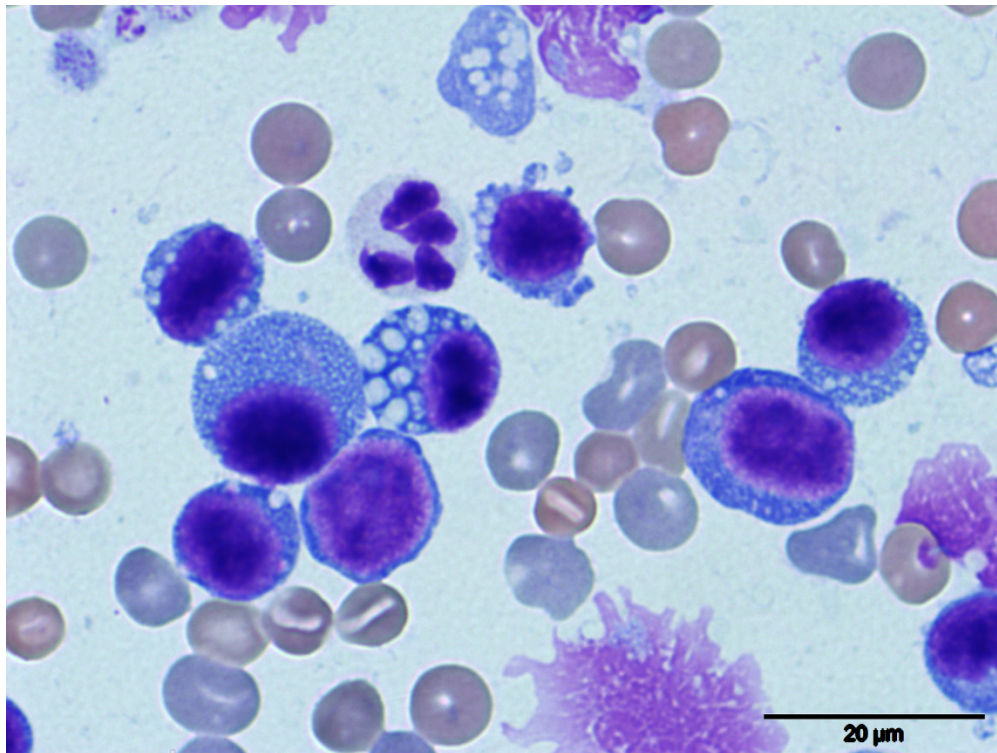


Figure 4
Abdominal mass in a hedgehog. Modified Romanowsky stain, Original magnification X1000

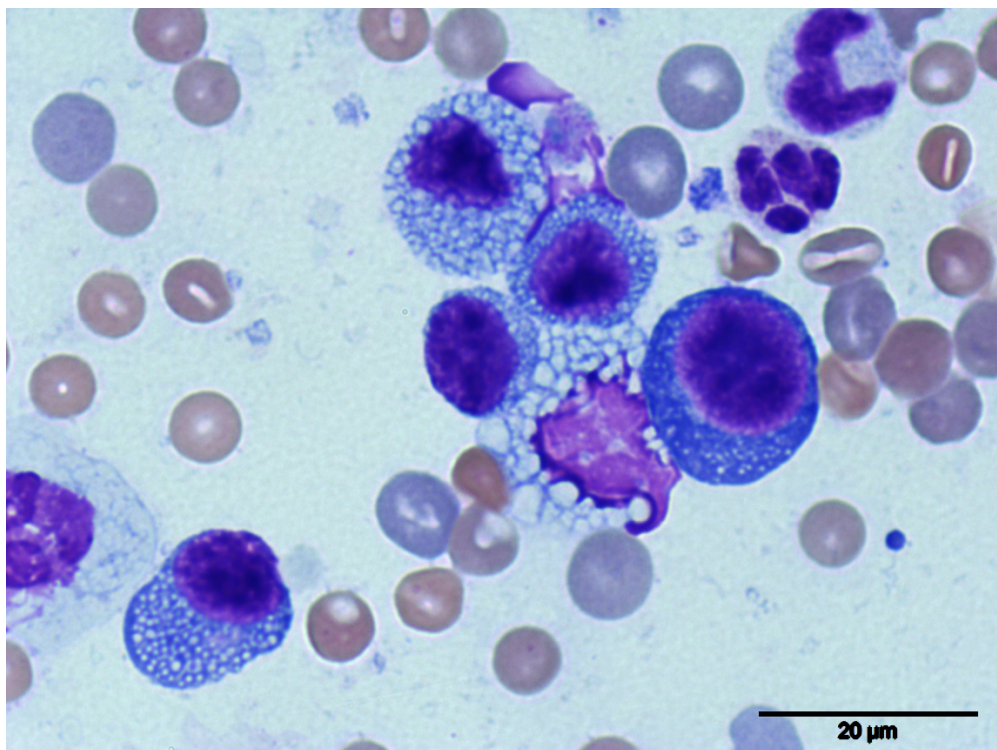


Figure 5
Abdominal mass in a hedgehog. Modified Romanowsky stain, Original magnification X1000